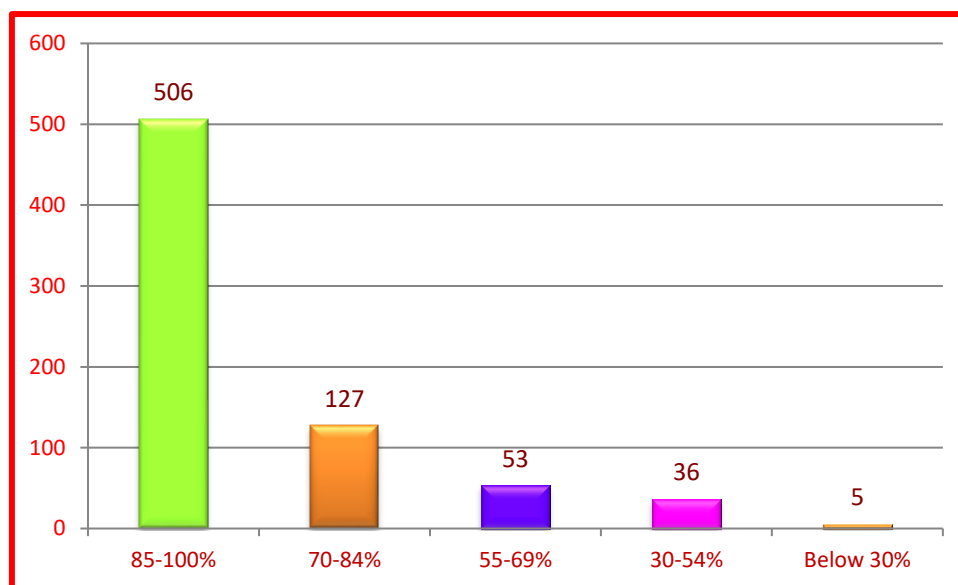


1. How much of the syllabus was covered in the class?

Total Responses: 727

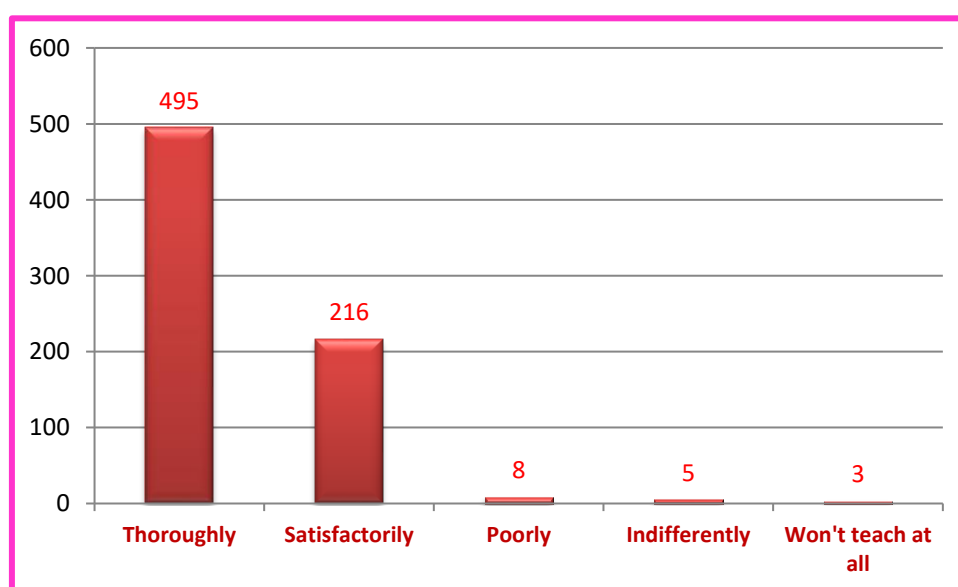
85 to 100%	70 to 84%	55 to 69%	30 to 54%	Below 30%
506	127	53	36	05



2. How well did the teachers prepare for the classes ?

Total Responses: 727

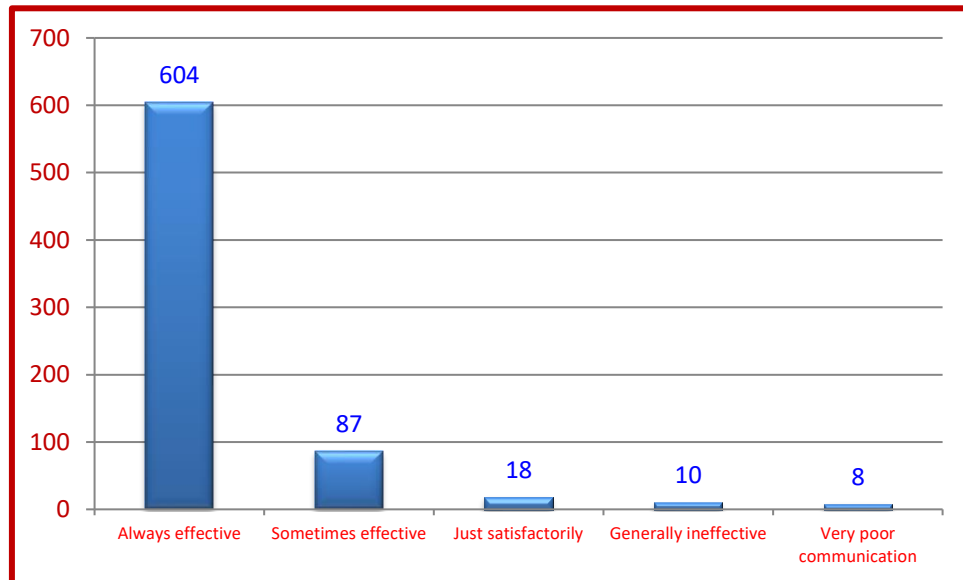
Thoroughly	Satisfactorily	Poorly	Indifferently	Won't teach at all
495	216	08	05	03



3. How well were the teachers able to communicate?

Total Responses: 727

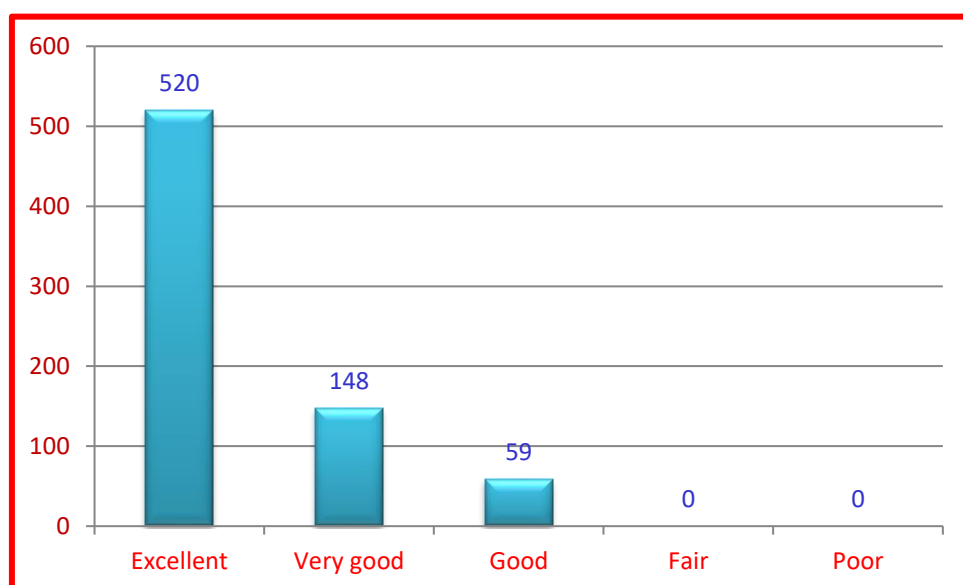
Always effective	Sometimes effective	Just satisfactorily	Generally ineffective	Very poor communciation
604	87	18	10	8



4. The teacher's approach to teaching can best be described as

Total Responses: 727

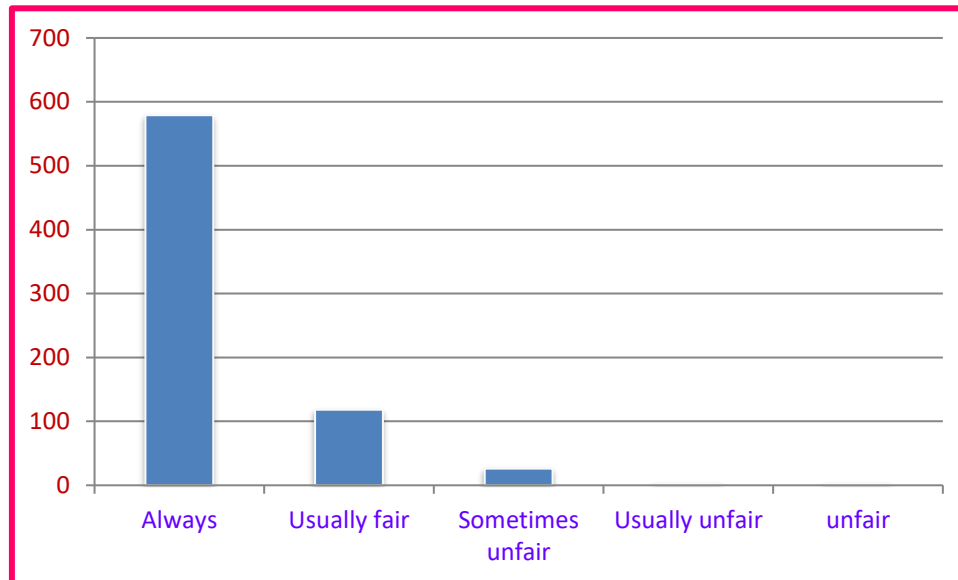
Excellent	Very good	Good	Fair	Poor
520	148	59	0	0



5. Fairness of the internal evaluation process by the teachers

Total Responses: 727

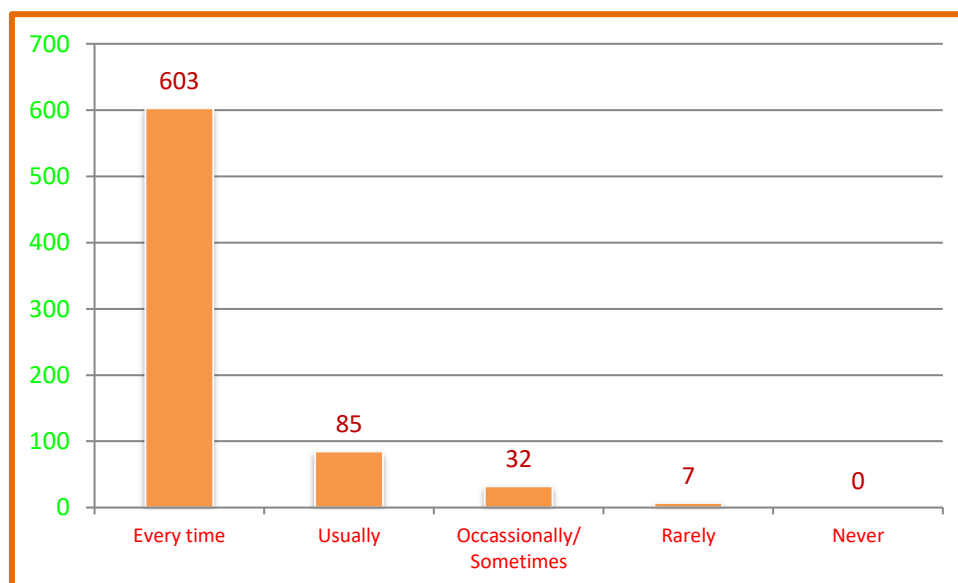
Always fair	Usually fair	Sometimes unfair	Usually unfair	unfair
579	118	26	2	2



6. Was your performance in assignments discussed with you?

Total Responses: 727

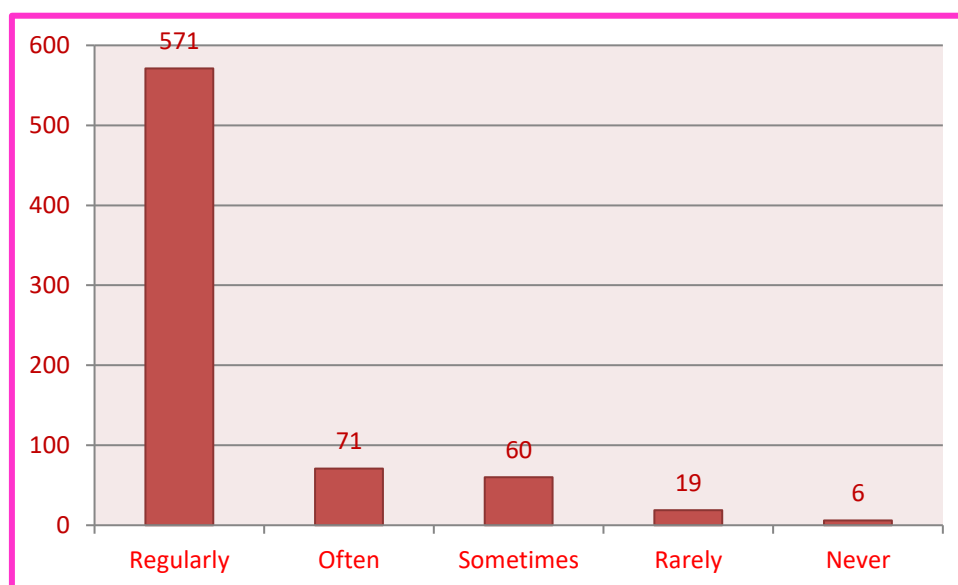
Every time	Usually	Occasionally/ Sometimes	Rarely	Never
603	85	32	07	0



7. The institute takes active interest in promoting internship, student exchange, field visit opportunities for students.

Total Responses: 727

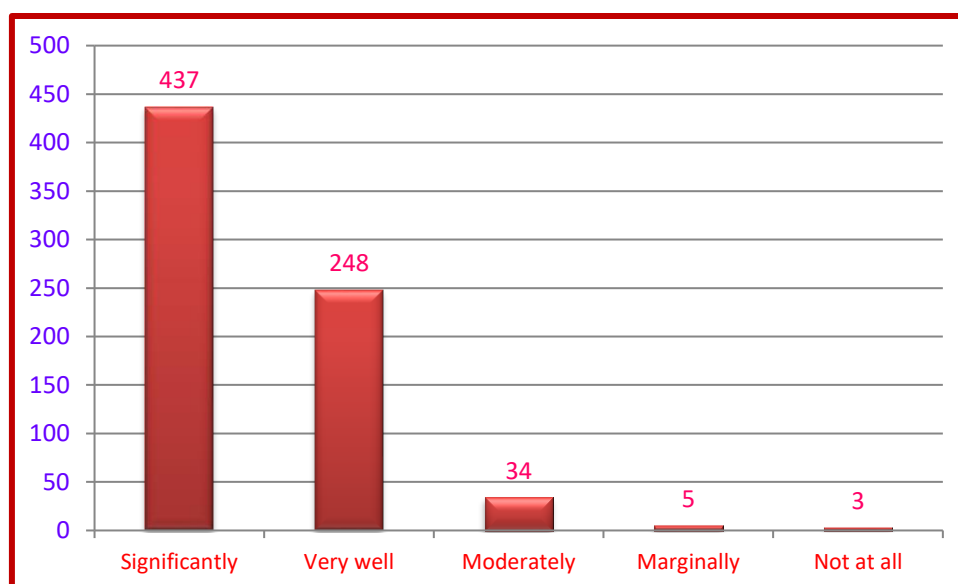
Regularly	Often	Sometimes	Rarely	Never
571	71	60	19	6



8. The teaching and mentoring process in your institution facilitates you in cognitive, social and emotional growth

Total Responses: 727

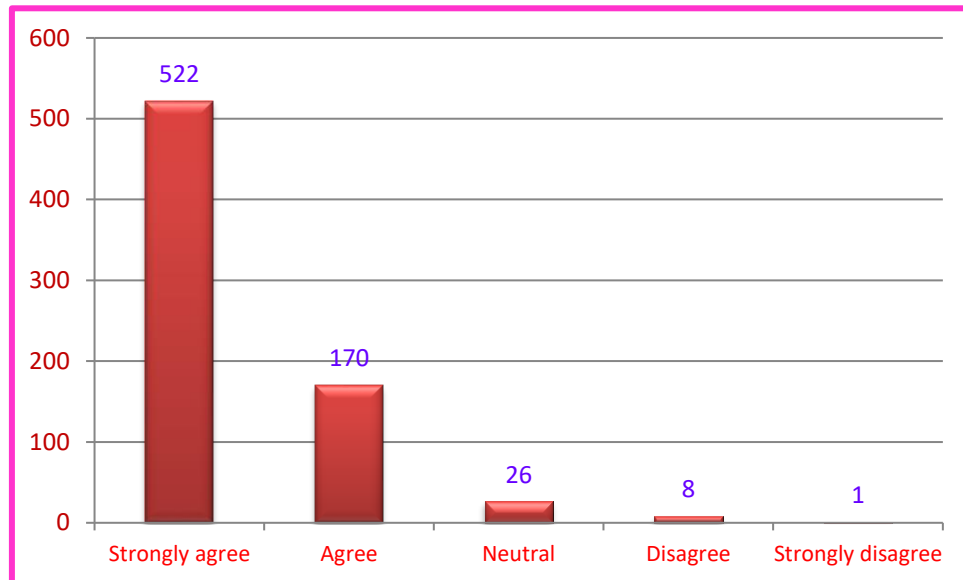
Significantly	Very well	Moderately	Marginally	Not at all
437	248	34	5	3



9. The institution provides multiple opportunities to learn and grow

Total Responses: 727

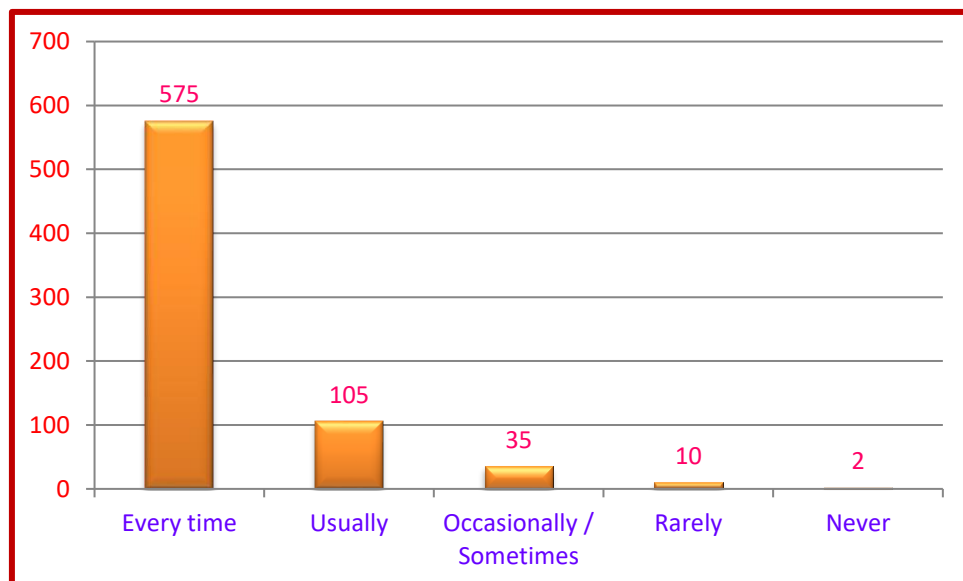
Strongly agree	Agree	Neutral	Disagree	Strongly disagree
522	170	26	8	1



10. Teachers inform you about your expected competencies, course outcomes and programme outcomes

Total Responses: 727

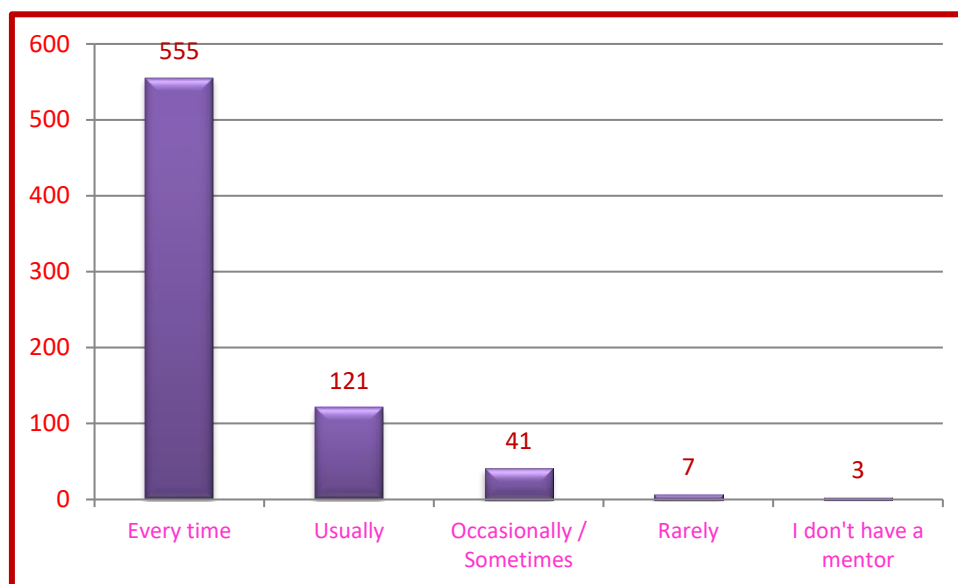
Every time	Usually	Occasionally/Sometimes	Rarely	Never
575	105	35	10	2



11. Your mentor does a necessary follow-up with an assigned task to you

Total Responses: 727

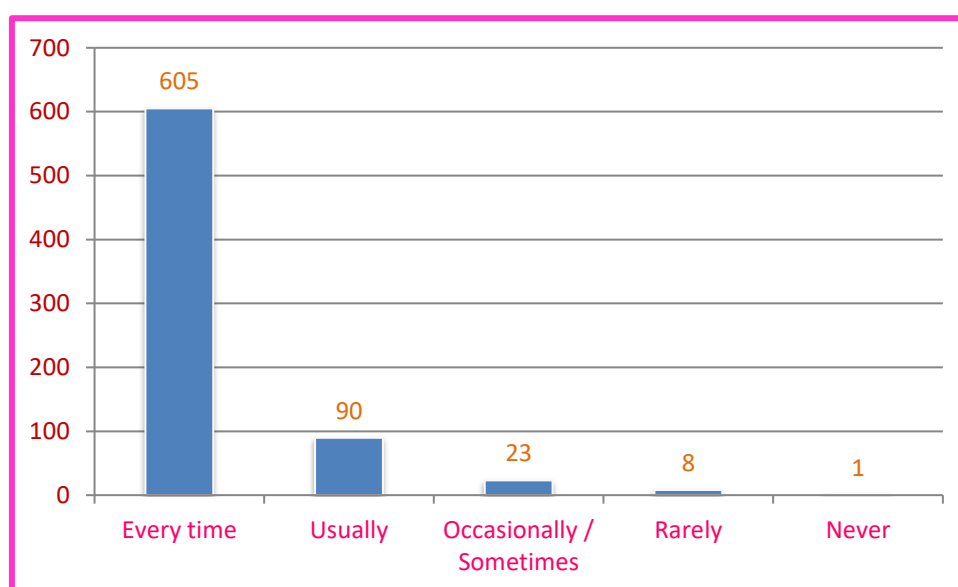
Every time	Usually	Occasionally/Sometimes	Rarely	I don't have a mentor
555	121	41	7	3



12. The teachers illustrate the concepts through examples and applications.

Total Responses: 727

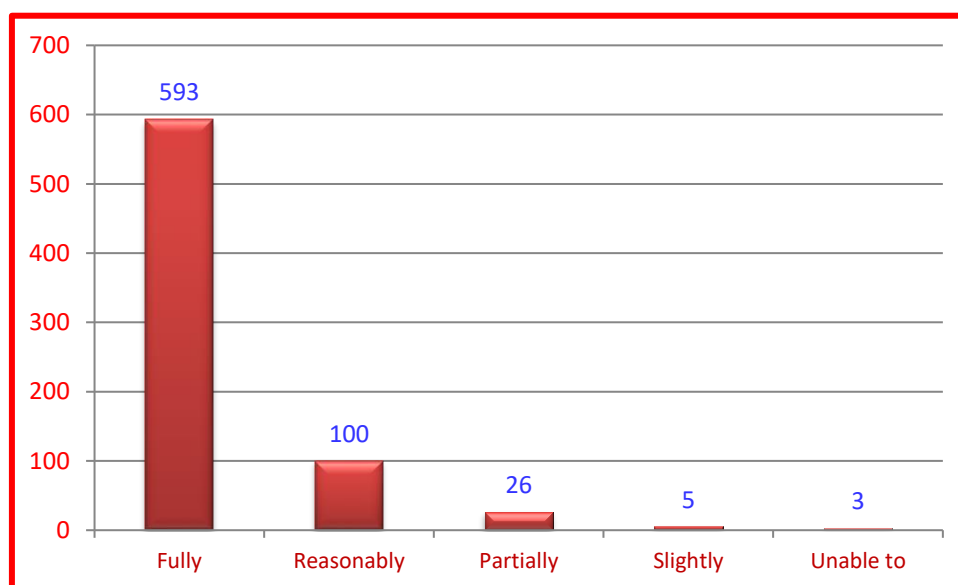
Every time	Usually	Occasionally/Sometimes	Rarely	Never
605	90	23	8	1



13. The teachers identify your strengths and encourage you with providing right level of challenges

Total Responses: 727

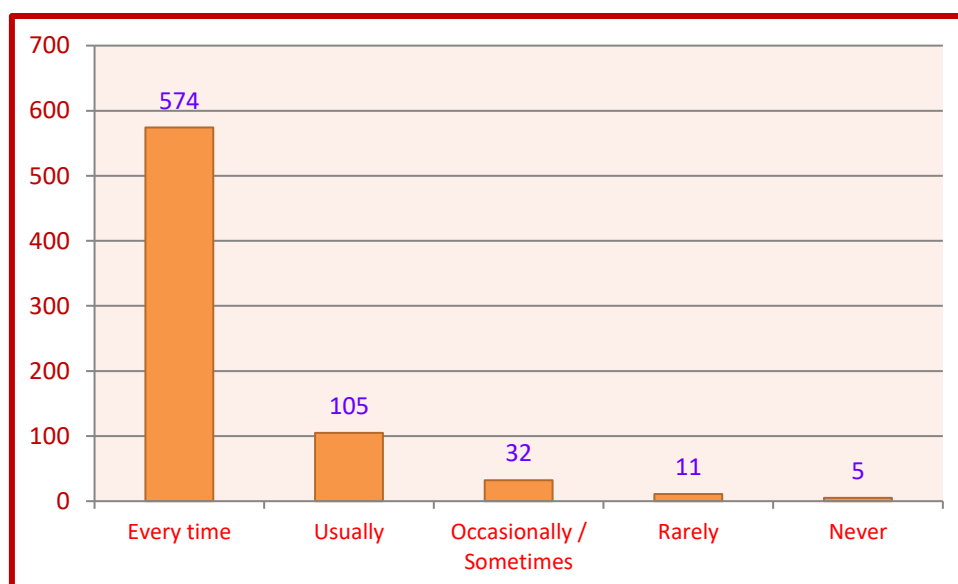
Fully	Reasonably	Partially	Slightly	Unable to
593	100	26	5	3



14. Teachers are able to identify your weaknesses and help you to overcome them.

Total Responses: 727

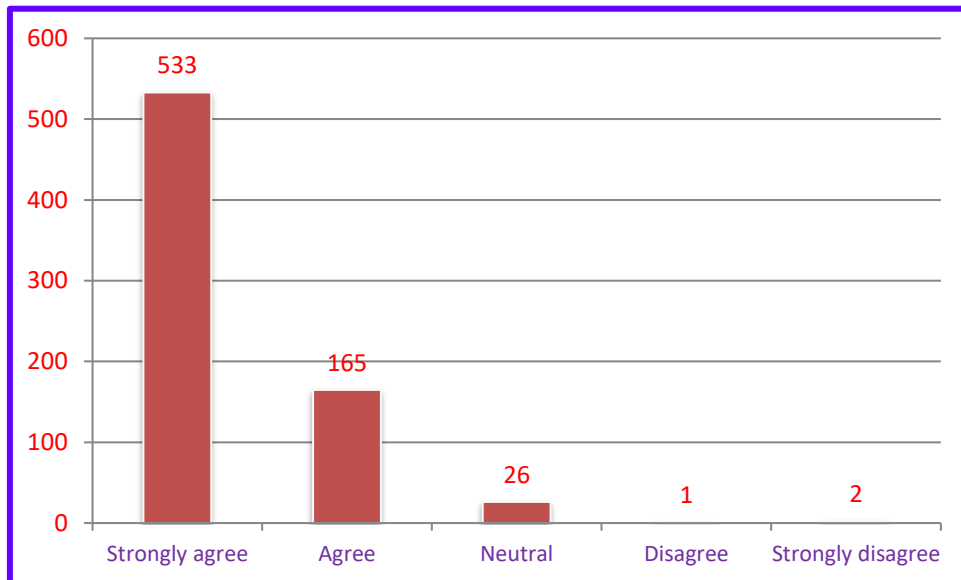
Every time	Usually	Occasionally/Sometimes	Rarely	Never
574	105	32	11	5



15. The institution makes effort to engage students in the monitoring, review and continuous quality improvement of the teaching learning process.

Total Responses: 727

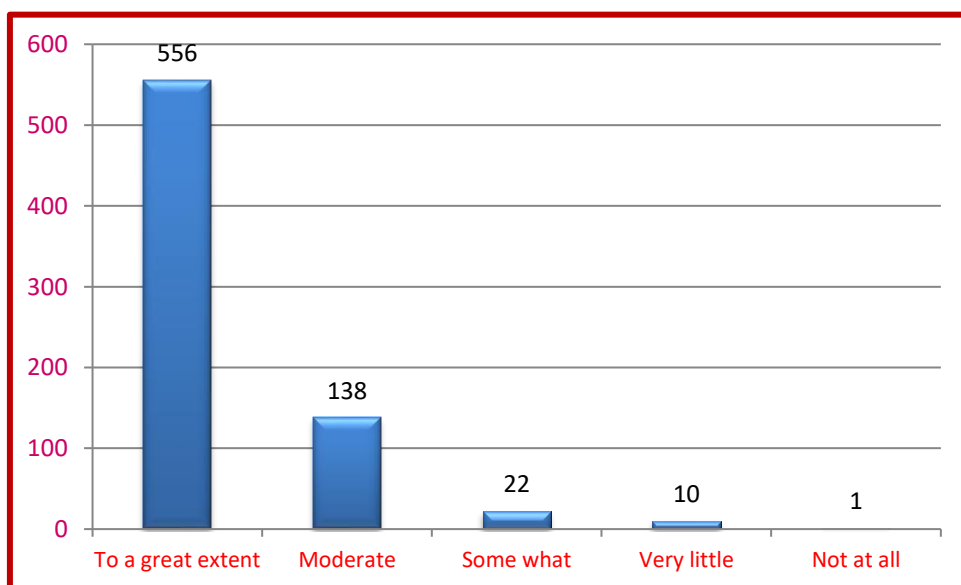
Strongly agree	Agree	Neutral	Disagree	Strongly disagree
533	165	26	1	2



16. The institute/teachers use student centric methods, such as experiential learning, participative learning and problem solving methodologies for enhancing learning experiences

Total Responses: 727

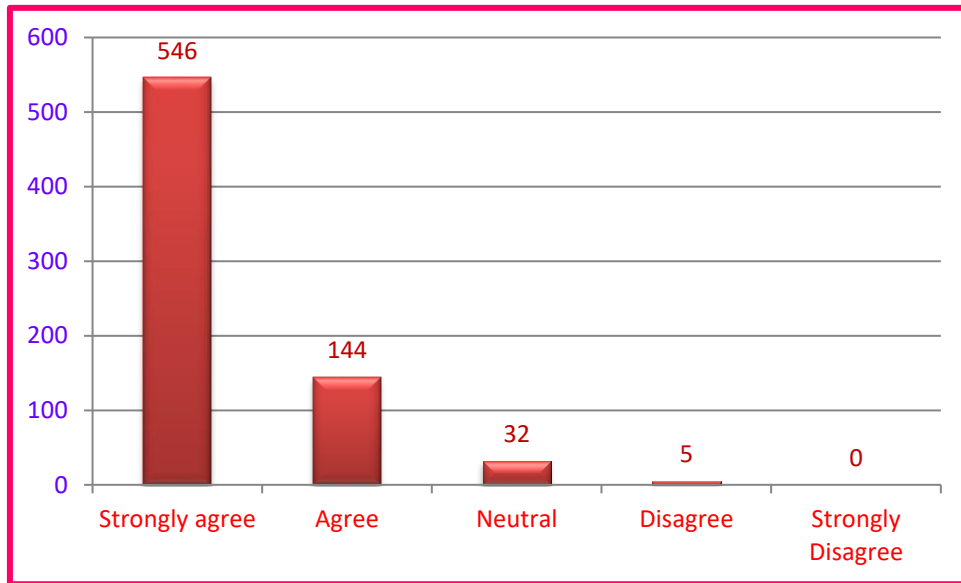
To a great extent	Moderate	Some what	Very little	Not at all
556	138	22	10	1



17. Teachers encourage you to participate in extracurricular activities.

Total Responses: 727

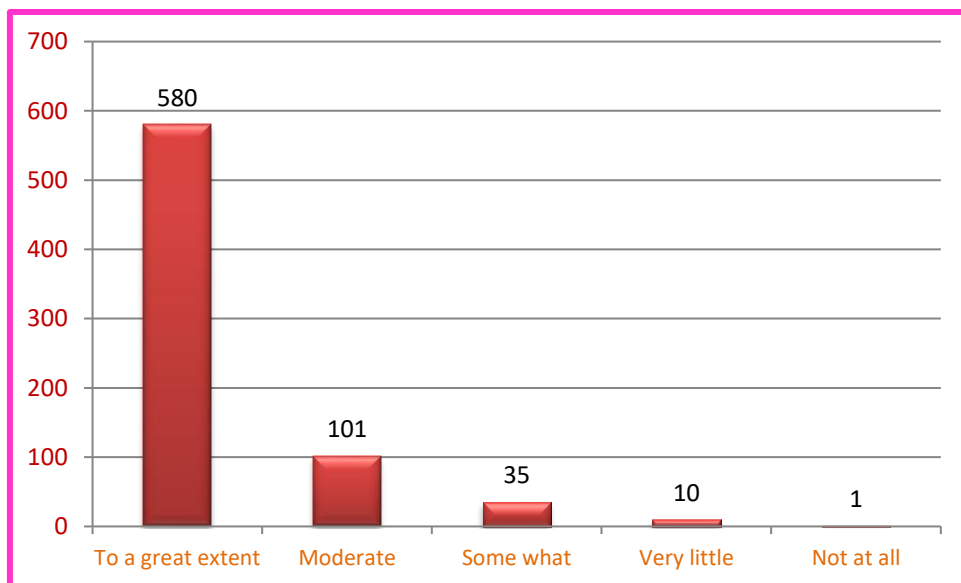
Strongly agree	Agree	Neutral	Disagree	Strongly disagree
546	144	32	5	0



18. Efforts are made by the institute/teachers to inculcate soft skills, life skills and employability skills to make you ready for the world of work

Total Responses: 727

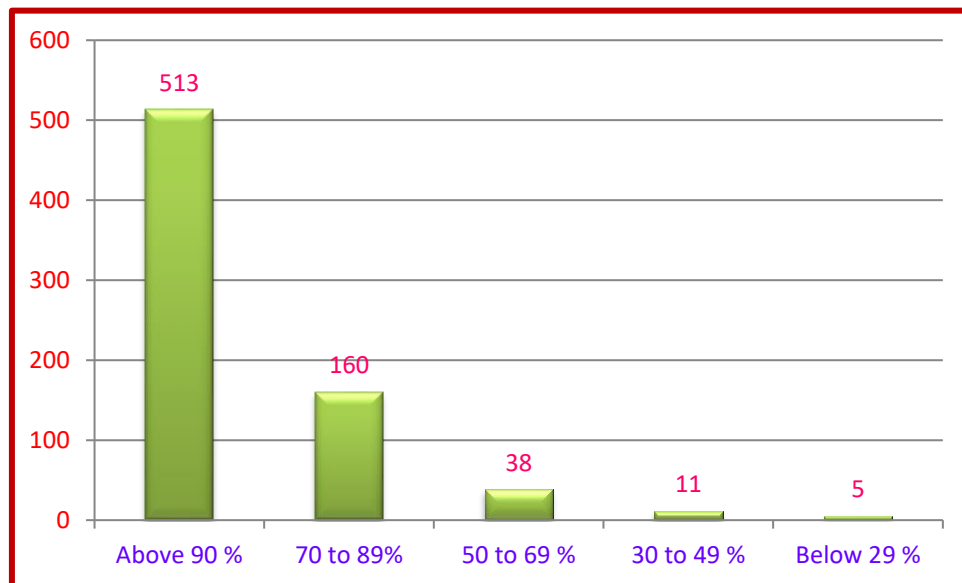
To a great extent	Moderate	Some what	Very little	Not at all
580	101	35	10	1



19. What percentage of teachers use ICT tools such as LCD projector, Multimedia, etc. while teaching.

Total Responses: 727

Above 90%	70 - 89 %	50 - 69%	30 - 49%	Below 29%
513	160	38	11	5



20. The overall quality of teaching-learning process in your institute is very good.

Total Responses: 727

Strongly agree	Agree	Neutral	Disagree	Strongly disagree
555	148	22	0	2

